

**IL-28B Antibody**  
**Catalog # ASC11700****Specification**

---

**IL-28B Antibody - Product Information**

Application	WB, IF, E
Primary Accession	<a href="#">Q8IZI9</a>
Other Accession	<a href="#">NP_742151</a> , <a href="#">28144901</a>
Reactivity	Human
Host	Rabbit
Clonality	Polyclonal
Isotype	IgG
Calculated MW	Predicted: 20 kDa
Application Notes	Observed: 16kDa KDa IL-28B antibody can be used for detection of IL-28B by Western blot at 1 - 2 µg/ml.

**IL-28B Antibody - Additional Information**Gene ID **282617****Target/Specificity**

IFNL3; IL-28B antibody is human specific. IL-28B antibody may cross-react with IL-28A and IL-29.

**Reconstitution & Storage**

IL-28B antibody can be stored at 4°C for three months and -20°C, stable for up to one year.

**Precautions**

IL-28B Antibody is for research use only and not for use in diagnostic or therapeutic procedures.

**IL-28B Antibody - Protein Information****Name** IFNL3**Synonyms** IL28B, IL28C, ZCYT022**Function**

Cytokine with antiviral, antitumour and immunomodulatory activities. Plays a critical role in the antiviral host defense, predominantly in the epithelial tissues. Acts as a ligand for the heterodimeric class II cytokine receptor composed of IL10RB and IFNLR1, and receptor engagement leads to the activation of the JAK/STAT signaling pathway resulting in the expression of IFN-stimulated genes (ISG), which mediate the antiviral state. Has a restricted receptor distribution and therefore restricted targets: is primarily active in epithelial cells and this cell type-selective action is because of the epithelial cell-specific expression of its receptor IFNLR1. Seems not to be essential for early virus-activated host defense in vaginal infection, but plays an important role in Toll-like receptor (TLR)- induced antiviral defense. Plays a significant role in the antiviral immune defense in the intestinal epithelium. Exerts an immunomodulatory effect by up-regulating MHC class I antigen expression.

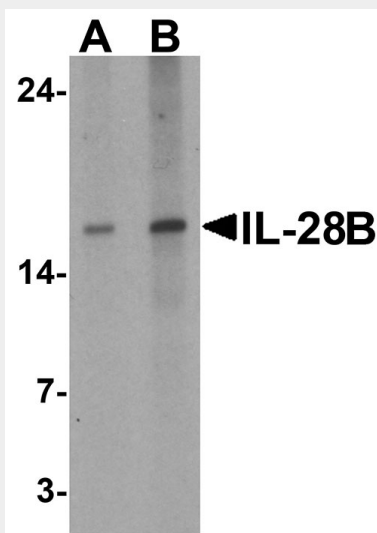
**Cellular Location**  
Secreted.

### IL-28B Antibody - Protocols

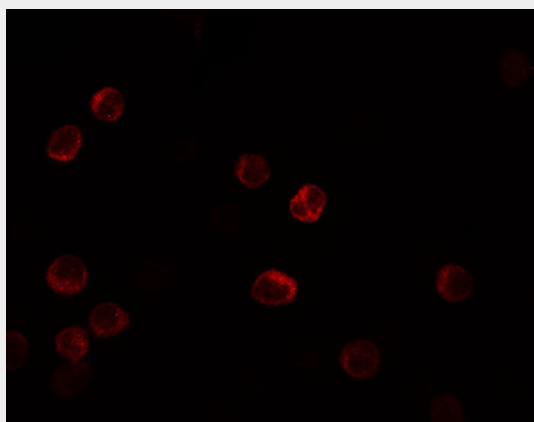
Provided below are standard protocols that you may find useful for product applications.

- [Western Blot](#)
- [Blocking Peptides](#)
- [Dot Blot](#)
- [Immunohistochemistry](#)
- [Immunofluorescence](#)
- [Immunoprecipitation](#)
- [Flow Cytometry](#)
- [Cell Culture](#)

### IL-28B Antibody - Images



Western blot analysis of IL-28B in HeLa cell lysate with IL-28B antibody at (A) 1 and (B) 2  $\mu$ g/ml.



Immunofluorescence of IL-28B in HeLa cells with IL-28B antibody at 5  $\mu$ g/mL.

### IL-28B Antibody - Background

Interleukin 28 (IL-28B), also known as interferon lambda 3, is cytokine distantly related to type I interferons and the IL-10 family (1). The IL-28B gene and the closely related cytokine genes IL-28A and IL-29 form a cytokine gene cluster on a chromosomal region mapped to 19q13. Expression of the cytokines encoded by the three genes can be induced by viral infection and can induce anti-viral activity (2,3). All three cytokines have been shown to interact with a heterodimeric class II cytokine receptor that consists of interleukin 10 receptor-beta (IL10RB) and interleukin 28 receptor-alpha (IL28RA) (1).

#### **IL-28B Antibody - References**

Sheppard P, Kindsvogel W, Xu W, et al. IL-28, IL-29 and their class II cytokine receptor IL-28R. Nat. Immunol. 2003; 4:63-8.

Osterlund PI, Pietila TE, Veckman V, et al. IFN regulatory factor family members differentially regulate the expression of type III IFN (IFN-lambda) genes. J. Immunol. 2007; 179:3434-42.

Meager A, Visvalingam K, Dilger P, et al. Biological activity of interleukins-28 and -29: comparison with type I interferons. Cytokine 2005; 31:109-18.